

**Improvement of the capacity of the public administrations in Ruse-Giurgiu Euroregion for better joint risk management, prevention and environmental protection
 JRMP**

Total budget	595.945,76 Euro	EU contribution	505.481,18 Euro
Start date	28.09.2010	End date	27.03.2012

1. Partnership

Lead Partner	Municipality of Ruse		
Lead Partner Address	Ruse 7000 6, Svoboda Sqr.	Contact person	Mr. Plamen STOILOV, Mayor Phone 00359 82 881 802, Fax: 00359 82 834 413, E-mail: mayor@ruse-bg.eu
Partner 2	Municipality of Giurgiu		
Partner 2 Address	49 - 51 Bucuresti street, Giurgiu	Contact person	Mr. Nicolae BARBU, Mayor Phone 0040 246 216 174, Fax: 0040 246 215 405, E-mail: primar@primaria-giurgiu.ro

2. Project Result:

Created information background for the realization of effective joint risk management; Improved strategic capacity to implement a common crisis management policy; Raised public awareness about the outlined Joint risk management policy of Ruse - Giurgiu area.

3. Project Story

Main activities of the project:

- Elaboration of methodology for assessment of the critical infrastructure;
- A field study observing the status of the critical infrastructure on Ruse-Giurgiu area (250 objects);
- Creation of 3 digital registers - Register of the critical infrastructure, Register of the Allocated forces within the cross-border area, Register for assessment of the preventive measures in case of crisis situations;
- Elaboration of joint flood prevention model including: methodology for GIS data base for risk management against floods; Methodology with simulation models for assessment of the flood damages; elaboration of GIS data base for the river network, water basins and protective infrastructure with digital relief model;
- Organization of trainings and seminar;
- Elaboration of Common strategy for crisis management, calamities and emergency cases;
- Elaboration of a Joint Action plan of crisis situations.

The project creates strong opportunity to improve the management of crisis situations, prevention, the public awareness and the coordination on all levels between the institutions, working in this field in Ruse-Giurgiu area and raises their technical and professional capacity.

The elaboration of a Common strategy and Joint action plan guarantees the safety of the Euroregion, where the occurred calamities have cross border effects and decreases the damages from potential crisis situations, accidents and disasters through pursuing of joint policy.

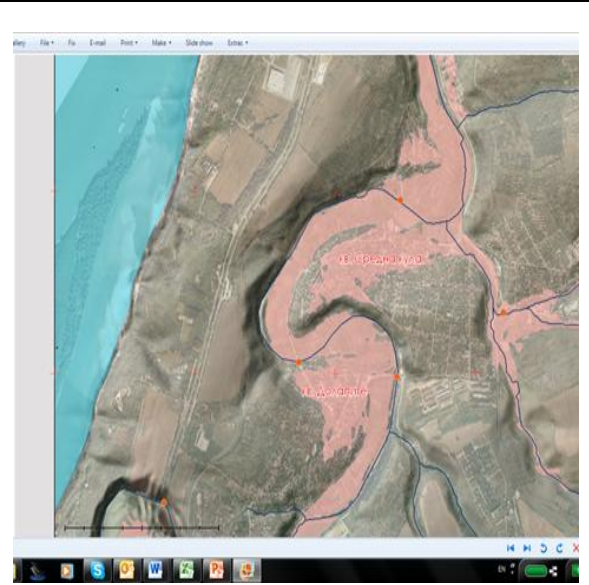
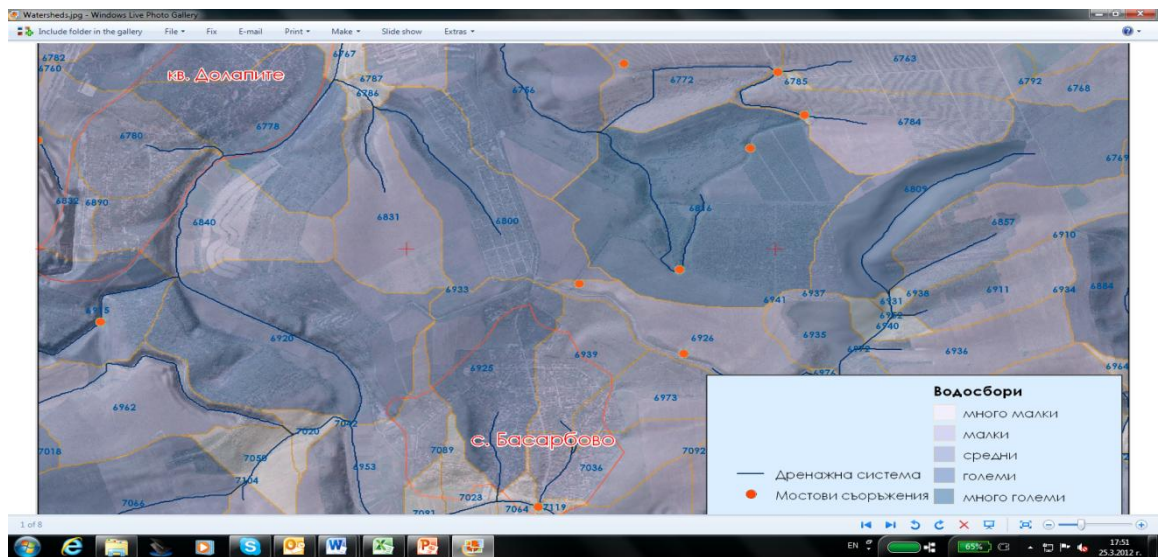


Photo Gallery

Maintenance and updating of data for critical infrastructure

Joint flood prevention model



Joint flood prevention model

www.cbcrromaniabulgaria.eu

Investing in your future!

Romania-Bulgaria Cross-Border Cooperation Programme 2007-2013 is co-financed by the European Union through the European Regional Development Fund